

We are looking for collaboration partnerships to join EU project proposals



CLIC Innovation – open innovation cluster

CLIC is a non-profit cluster management company based on public-private-partnership model. We build and manage research, development and innovation collaboration between industries and academia in the fields of circular economy, bioeconomy and energy system transition.

We are looking for collaboration partnerships to join EU project proposals.

Our expertise in EU projects lie in

- coordination, communication, dissemination and exploitation activities,
- reviews of operational environment as well as in
- stakeholder, network and ecosystem engagement and involvement.

Ecosystem facilitation, industry representation and co-creation especially and development of tools and methods for co-creation and co-innovation are in the core of CLIC's expertise. We have also coordinated CSA and RIA projects. CLIC's extensive stakeholder network is also a pool for potential companies to join new proposals.



CLIC cluster is a cross-organizational and cross-sectoral fast-moving network. The shareholders of the non-profit CLIC include 30 large and international companies and 16 universities and research institutions. The programs and projects managed by CLIC have involved more than 200 stakeholders, including around 50 SMEs from Finland. CLIC builds and manages collaborative RDI projects and programs (up to 50 M€ per program) to construct systemic solutions which are beyond the resources of individual operators.

We address systemic challenges that arise from the scarcity of natural resources. CLIC Innovation speeds up the commercialization of new information by initiating and orchestrating solution-oriented projects covering the entire field from curiosity research to demonstrations. CLIC is the core local node of global cross-industrial and inter-disciplinary competence network with business relevance. We contribute to developing a more favourable innovation environment in Finland and the EU.



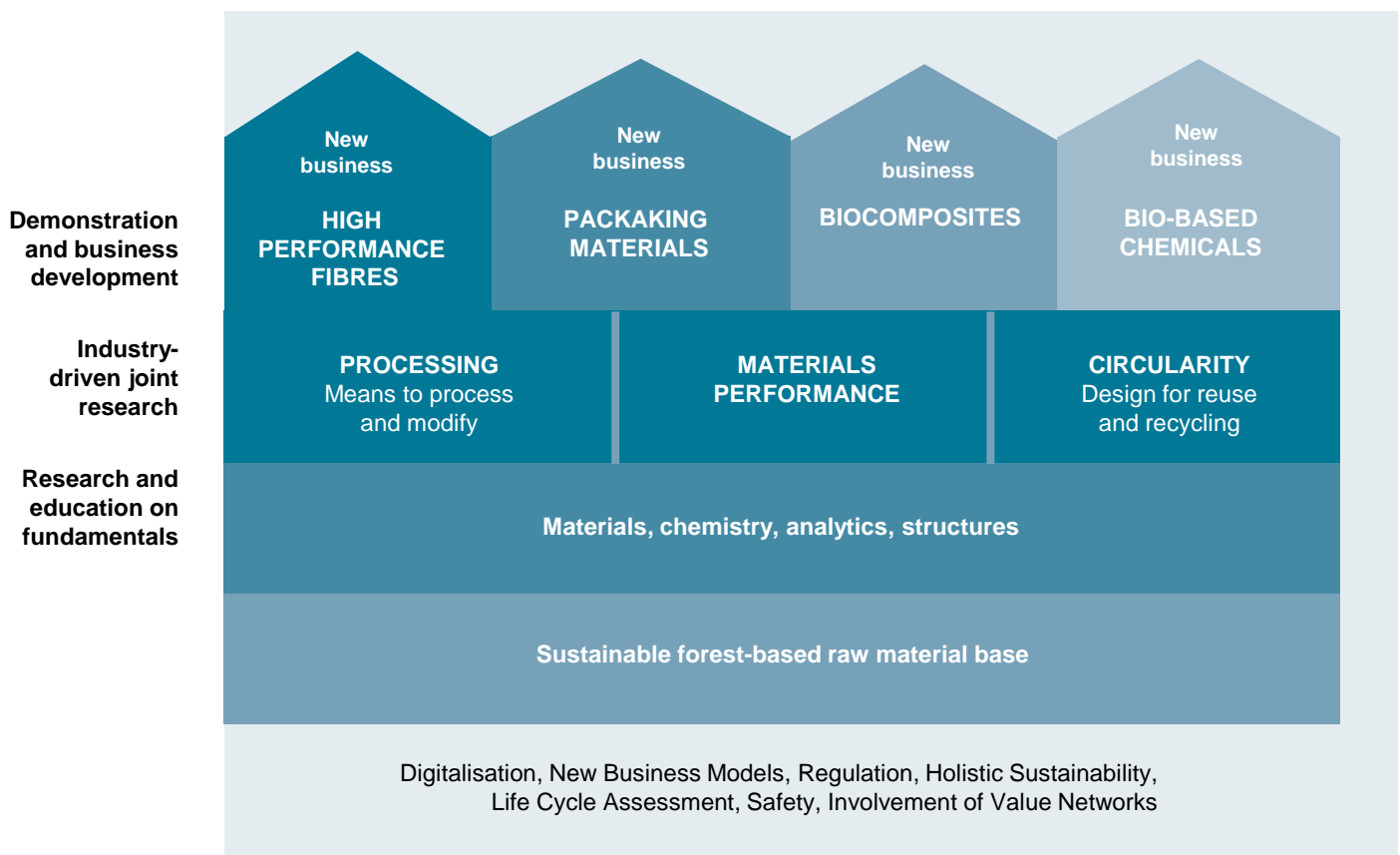
Three strategic focus themes of CLIC Innovation

with the following CLIC's Strategic Research & Innovation Agendas (SRIAs) and application areas:

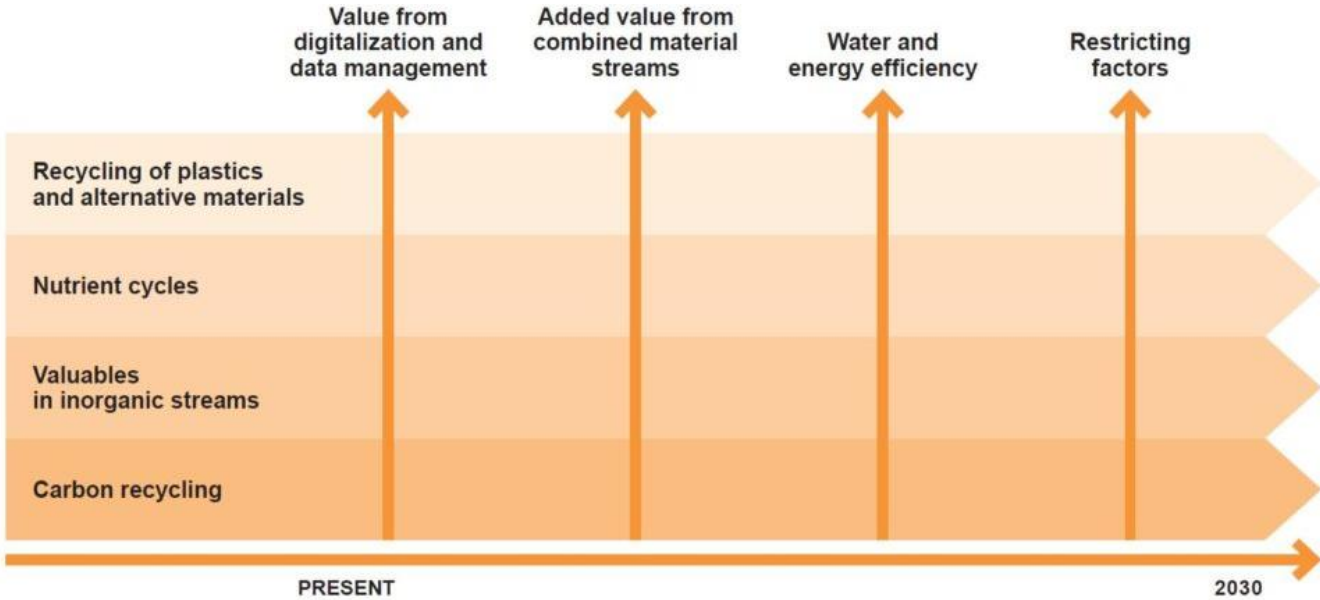
1

BIOECONOMY

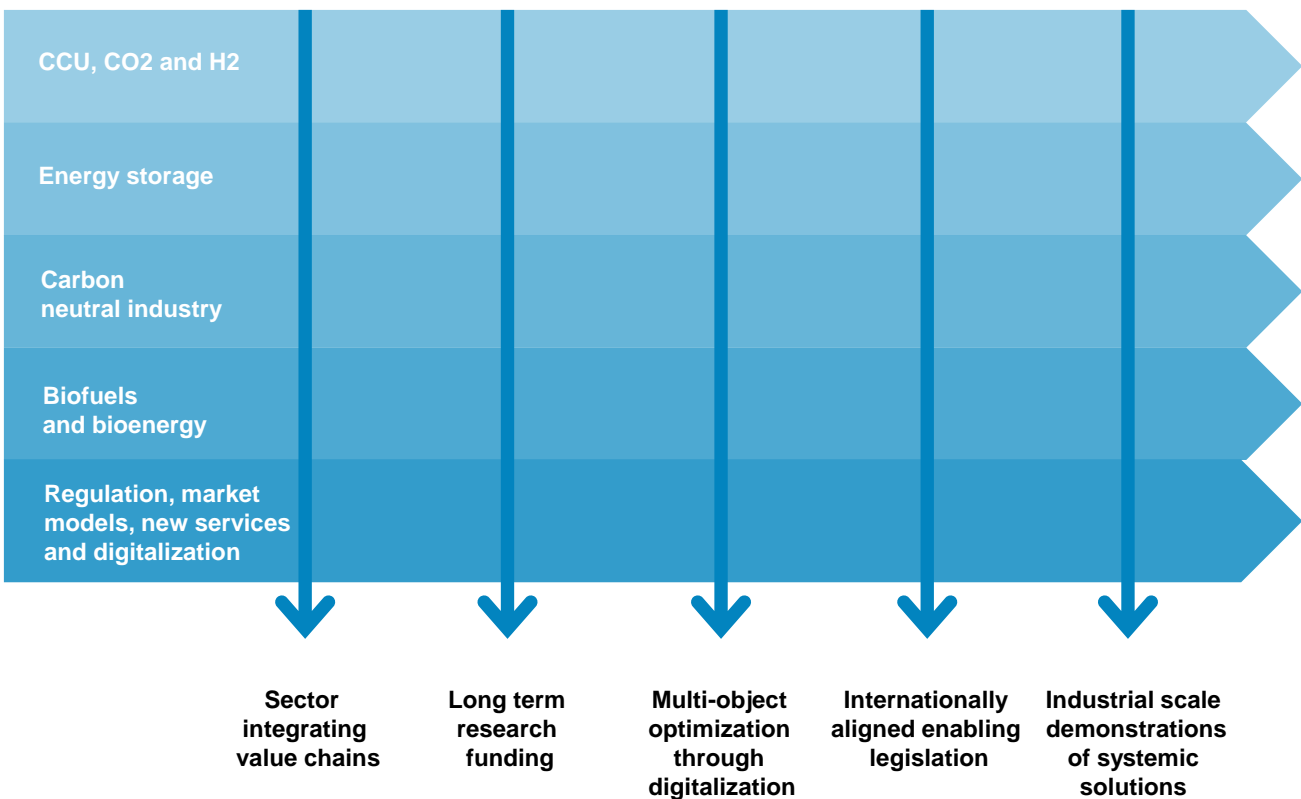
Building business in forest-based bioeconomy based on the world leading competences



2 CIRCULAR ECONOMY



3 ENERGY SYSTEMS

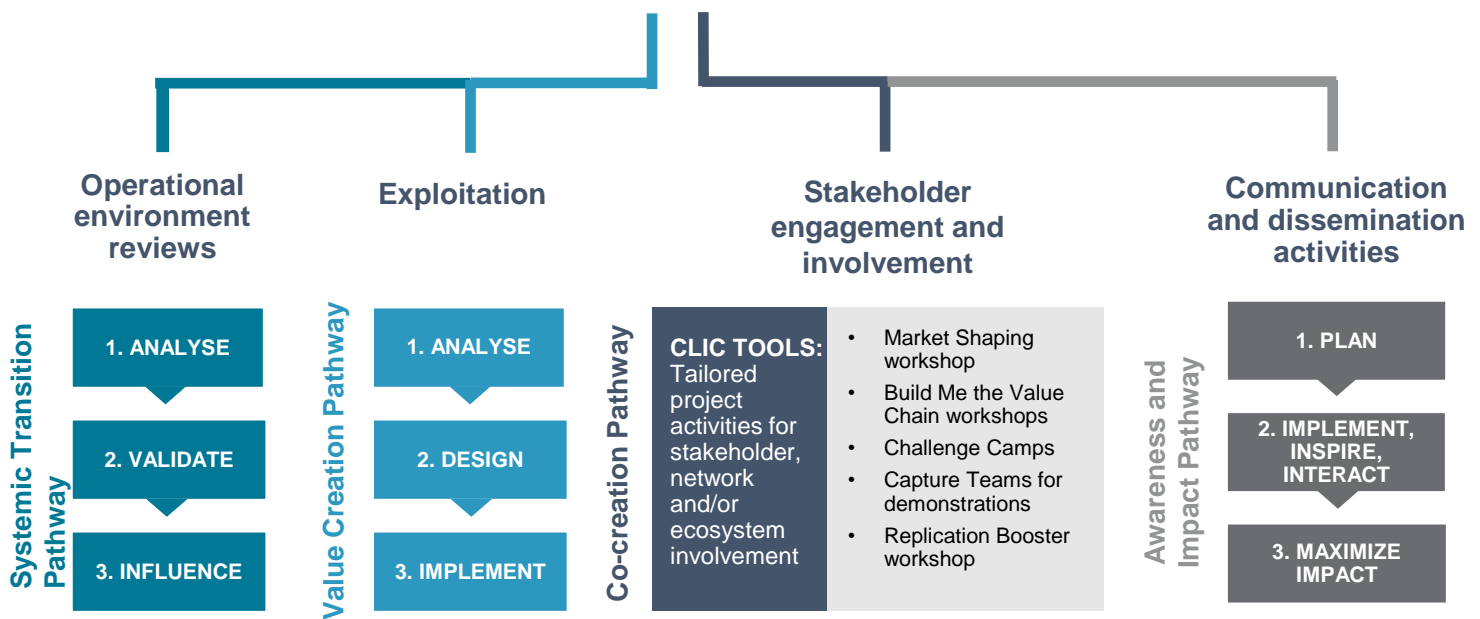


CLIC's expertise and experience in EU projects

CLIC has 4 different Pathways to steer the research, development and innovation pipeline towards maximum impact: **'Systemic Transition Pathway'**, **'Value Creation Pathway'**, **'Co-Creation Pathway'** and **'Awareness and Impact Pathway'**.

CLIC's core expertise

Stakeholder, networks and ecosystem identification, mapping and involvement



The different Pathways maximize the involvement of important project stakeholders, networks and ecosystems – they work both as standalone tasks/WPs and as parts to be included in relevant tasks/WPs. We tailor the Pathways for best possible configuration for each project based on the role required.

CLIC's expertise and experience in EU projects

CLIC's expertise and experience in different EU and other RDI projects are listed below. These are activities where we are looking for new project roles and are happy to collaborate. CLIC's extensive owner and associate member network is also available (see next page).

Activity	CSA	RIA	IA
Project coordination and management	CSA project coordination, reference EU project: BIOSWITCH H2020 BBI JU	RIA project coordination, reference EU project: SmartLi H2020 project	-
Communication & dissemination	<p>CLIC has developed an efficient Awareness and Impact Pathway' communication and dissemination tools tailored for its EU projects. CLIC is experienced in leading C&D WP and specific tasks. CLIC has an internal communication team, and uses e.g. graphic designers and web developers to support C&D activities. CLIC has an active LinkedIn profile and Twitter account. We have advanced digital tools to execute and manage C&D activities in various platforms.</p> <p>Reference EU project: FRACTION H2020 project (RIA), TREASoURcE HEU (IA)</p>		
Exploitation	<p>CLIC has developed comprehensive 'Value Creation Pathway' exploitation tools tailored for its EU projects. CLIC's exploitation team has multidisciplinary experience from various industrial sectors, and different phases of innovation (RDI, scale-up, commercialization, marketing and sales). Based on CLIC's RDI and ecosystem coordination experience, CLIC has developed knowledge and RDI management tools for open innovation collaboration. (See www.ecosystemplaybook.com)</p> <p>References: ERANet Smart Energy Systems, CETP CLIC managed ecosystems: IBC Finland Ry, 4Recycling, GreenE².</p>		
Stakeholder, network and ecosystem engagement and involvement	<p>Stakeholder engagement and involvement for tailored project activities, e.g. for value chain building, matchmaking and/or exploitation. CLIC's 'Co-creation Pathway' includes a variety of developed engagement and involvement tools: Facilitated Roundtable Discussions, External Advisory Groups, Ecosystem development, Capture Teams for demonstrations, Build Me the Value Chain, Knowledge Events, Challenge Camps, Matchmaking events, Pitching events, RDI Roadmap building, Market Shaping, for more ideas visit www.ecosystemplaybook.com</p> <p>Reference EU projects: BIOSWITCH, FRACTION, SmartLi, Pilots4U, TREASoURcE</p> <p>CLIC managed ecosystems: IBC Finland Ry, 4Recycling, GreenE².</p>		
Operational environment reviews	<p>As part of the 'Systemic Transition Pathway' tool, CLIC carries out operational environment studies. This includes desktop reviews, qualitative research (interviews, surveys, questionnaires, workshops) related to operational and regulatory framework/environment to identify enablers and inhibitors (barriers, bottlenecks, needs, incentives, best practices) for successful development and implementation of project results. This Pathway is done in close collaboration and involvement with stakeholders. Co-creating solutions to support overcoming identified inhibitors and further emphasise verified enablers with these important stakeholders is central. This ensures successful and rapid uptake of project results as they systemically take into consideration the operational environment they are developed for.</p>		

CLIC owners for EU project proposals

CLIC can scout and contact possible partners that the project would benefit from or needs. CLIC has 46 owners and additionally some associate partners that can be easily and readily contacted. If partner joins the proposal, CLIC can coordinate partner's participation and support their involvement in the project.

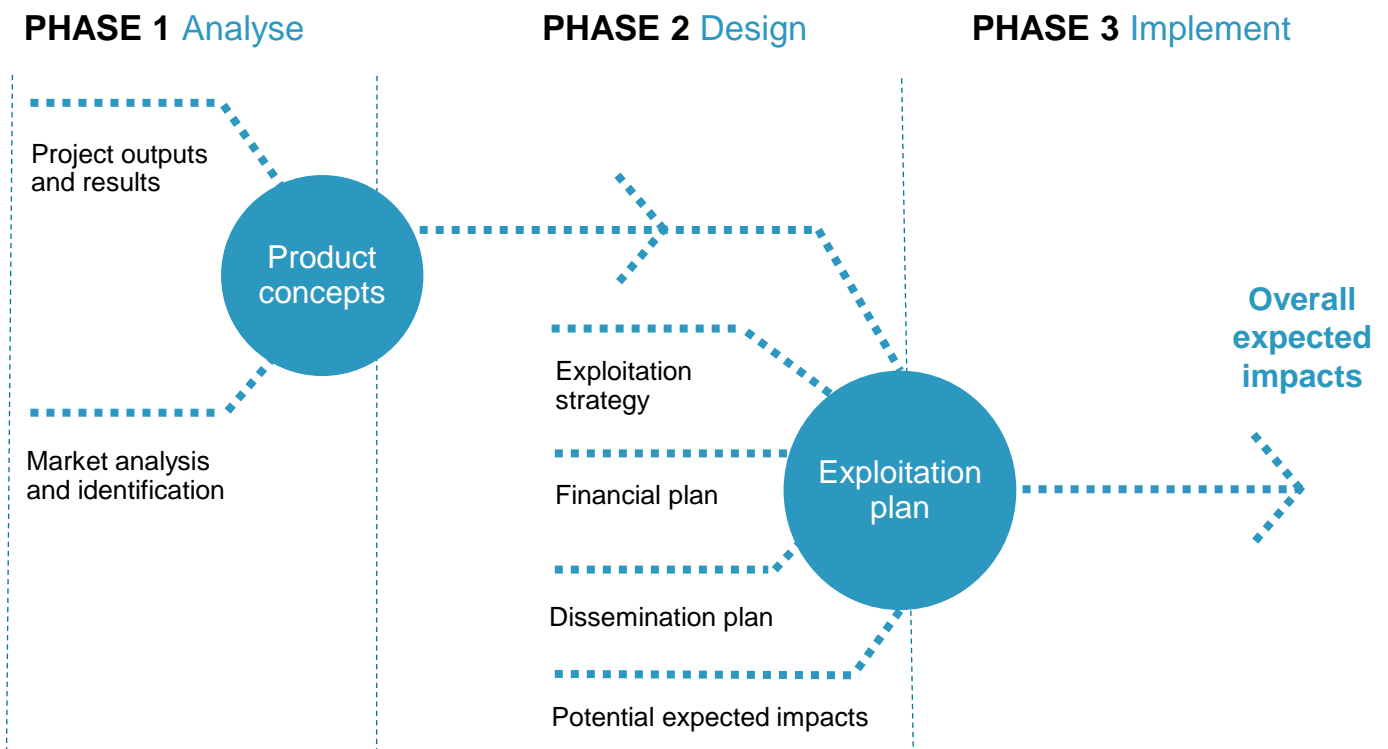
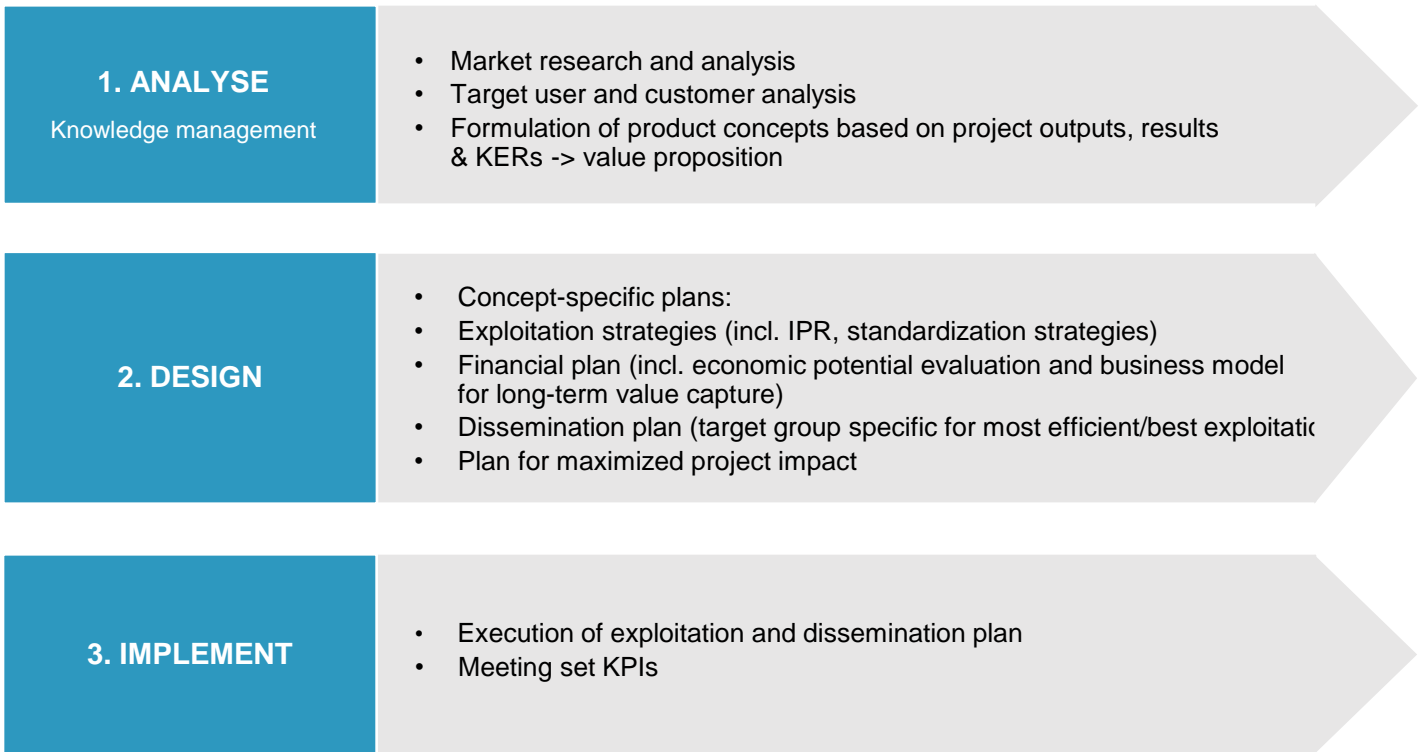
CLIC's stakeholders in the thematic areas include chemical companies, material and product (biobased, conventional plastics) producers, equipment manufactures, recyclers, pulp, fibre and paper companies, energy companies, universities, research, development and innovation organisations.

Stakeholder types: large industry, SMEs, start-ups, UNIs, RTOs.



CLIC's Exploitation tool

EXPLOITATION Value creation pathway



OPERATIONAL ENVIRONMENT REVIEWS

Systemic Transition Pathway

1. ANALYSE

Operational environment state and conditions related data collection and analysis (desktop research and stakeholder interviews):

- Barriers, bottlenecks
- Incentives, motivations, best practices
- Inhibitors and enablers of regulation

2. VALIDATE

Stakeholder involvement to consolidate findings:

- Co-create measures to overcome identified barriers
- Co-create pathways for transferable practices, exploitation and further impact

3. INFLUENCE

- Co-create policy recommendations
- Co-create white papers or other relevant publications
- Widespread target-group focused dissemination

STAKEHOLDER ENGAGEMENT AND INVOLVEMENT

Co-creation pathway

Stakeholder engagement and involvement

Co-creation Pathway

CLIC TOOLS:

Tailored project activities for stakeholder, network and/or ecosystem involvement

- Market Shaping workshop
- Build Me the Value Chain workshops
- Challenge Camps
- Capture Teams for demonstrations
- Replication Booster workshop

COMMUNICATION AND DISSEMINATION ACTIVITIES

Awareness and impact pathway

Communication and dissemination activities

Awareness and Impact Pathway

1. PLAN

2. IMPLEMENT, INSPIRE, INTERACT

3. MAXIMIZE IMPACT

- Project environment: targeted stakeholder groups, related other projects, networks and ecosystems.
- Key messages
- C&D KPIs and their management
- Ethics of C&D activities, compliance of relevant regulations
- Data management
- Project visual look (logos, templates)
- Website and social media accounts
- Media kit: Brochures, posters, flyer, fact sheet, project introduction presentation
- Publications, press releases, social media posts, newsletters, blog posts
- Infographs, videos, animations
- Events, organisation and participation (both internal, external): conferences, seminars, webinars, podcasts, workshops, roundtables.

Further project references

Managing innovation ecosystems

- 4Recycling, 2019 - 2021, 17 partners
- New Fibres ecosystem project, 2016 – 2018
- Smart Energy Åland/FLEXe Demo: 2016 – 2019, 19 companies, 5 research institutes, 0.5 M€

Bioeconomy

- Engage4BIO, 2022 – 2025, 21 partners, 2,5 M€
- TREASoURcE, 2022 – 2026, 17 partners, 10 M€
- SUSBINCO, 2021 – 2023, 6 companies (4 collaborative partners), 7 research institutes, 10,1 M€
- FRACTION, 2021 – 2023, 12 partners, 6,2 M€
- BIOSWITCH, 2020 – 2022, 8 partners, 1 M€
- 4Recycling open innovation ecosystem, 2019 -> (Joint activity with Circular Economy)
- Joint activity with Circular Economy
- Pilots4U, 8 partners, 2017 - 2019
- New Fibres ecosystem project, 2016 – 2018
- New fiber products (New FP), 2016 – 2017, 8 companies, 5 research institutes, 3M€
- Smart technologies for the conversion of industrial lignins (SmartLi), 2015 – 2018, 12 partners, 2.4 M€
- Advanced cellulose to novel products (Acel), 2014 – 2017, 9 companies and 6 research institutes, 9 M€
- BEST – Sustainable bioenergy solutions for tomorrow, 2013 – 2016, 25 companies, 15 research institutes, 15 M€
- Forest industry's new value networks, 2013 – 2014, 20 companies, 1.2 M€
- Future Biorefinery Joint Research 2 (Fubio 2), 2011 – 2014: 11 companies, 11 research institutes, 21.1 M€
- Future Biorefineries Products from Dissolved Cellulose (Fubio), 2011 – 2014, 7 companies, 7 research institutes, 11.6 M€
- Efficient Networking Towards Novel Products and Processes (EffNet), 2010 – 2013: 8 companies, 8 research institutes, 15 M€
- Value through Intensive and Efficient Fibre Supply (EffFibre), 2010 – 2013: 11 companies, 5 research institutes, 11.0 M€
- Future Biorefinery (Fubio 1), 2009 – 2011: 17 companies, 9 research institutes, volume 18.7 M€
- Radical customer and market-oriented innovations, 2009 – 2011, 13 companies, 9 research institutes, 2.0 M€
- Intelligent and Resource-Efficient Production Technologies, 2008 – 2010: 16 companies, 8 research institutes, 9.4 M€

Circular economy

- TREASoURcE, 2022 – 2026, 17 partners, 10 M€
- ALL-IN for Plastics Recycling (PLASTin), 2020 – 2022, 4 companies (5 collaborative partners) , 5 research institutes, 2,9 M€
- Uudenmaan kiertotalouslaakso -esiselvitys, 1.4.- 31.10.2021, 4 partners, 225 k€
- Sitra IHAN Program (CEP), 1.8.2020 – 28.2.2021, 30 k€ (CLIC)
- 4Recycling open innovation ecosystem, 2019 -> (Joint activity with Bioeconomy)
- Symbiosis of Metals Production and Nature (SYMMET), 2019 – 2020, 8 companies, 4 research institutes, 6,9M€
- Circular Economy Service Platform (CEP) Phase 1, 2018 – 2019, 9 companies, 3 research institutes, 0.4 M€
- ARVI: 2014 – 2017, 22 companies, 10 research institutes, 10 M€

Energy systems

- Hydrogen and Carbon Value Chains in Green Electrification (HYGCEL), 2021 - 2023 , 10M€
- Highly Optimized Energy Systems (HOPE), 2020 – 2022, 6 companies, 5 research institutes, 12.2 M€
- GreenE² open innovation ecosystem, 2020 ->
- ERA-Net Smart Energy Systems, 2015 –
- Member of support team in coordination Smart Energy Åland/FLEXe Demo: 2016 – 2019, 19 companies, 5 research institutes, 0.5 M€
- CEMBioFlex – six partners, 2018, 5 companies, 2 research institutes, 0.2 M€
- VaGe: 2016 – 2018, 2 research institutes
- Support in project management and dissemination by CLIC Innovation
- FLEXe : 2015 – 2016, 17 companies, 10 research institutes, 14 M€
- Efficient Energy Use (EFEU): 2012 – 2016, 13 companies, 5 research institutes, 11 M€
- Distribute Energy Systems (DESY), 2012 – 2014, 13 companies, 6 research institutes, 1.2 M€
- Carbon Capture and Storage Program (CCSP): 2011 – 2016, 18 companies, 9 research institutes, 15 M€
- Smart Grids and Energy Markets (SGEM), 2010 – 2014, 19 companies, 8 research institutes, 12 M€
- Future Combustion Engine Power Plants (FCEP), 2010 – 2014, 9 companies, 9 research institutes, 38 M€